

PRO~flex Range

FLEXIBLE AC CURRENT PROBE

Our new **PRO~flex** range of flexible AC current probes is based on the Rogowski coil principle.

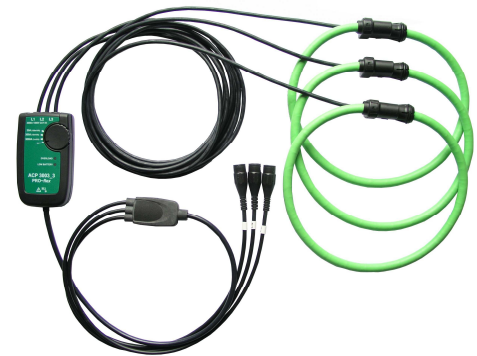
The probes comprise a flexible air-cored sensor which can be opened, allowing them to be installed around a primary conductor without interrupting the circuit. Due to the flexibility of the measuring heads it is possible to position them around one or more irregularly shaped or difficult to access conductors or bus bars.



PRO~flex range is suitable to conveniently measure single and three phase AC as well as pulsed DC currents. Standard ranges are 30/300/3000 Amps resp. 60/600/6000 Amps with 3 V rms full scale output. The analog output voltage is proportional to and galvanically isolated from the measured current.

These probes offer key advantages:

- Flexible, Lightweight and easy to install
- Wide dynamic range
- High frequency bandwidth
- No magnetic hysteresis, saturation or non linearity
- Long battery life 2000 hrs / 1000 hrs (3 phase)
- External power option
- Small head diameter (9.9mm) giving easy access to conductors in confined areas
- 1000V, CATIII, Pollution degree 2
- IP65 (probe head)



3 basic construction configurations are available:

ACP 3000_3 range is designed as an accessory to multimeters, oscilloscopes and other recording instrument with voltage inputs.

ACP 3003_3 is designed for AC current measurement in three phase systems.

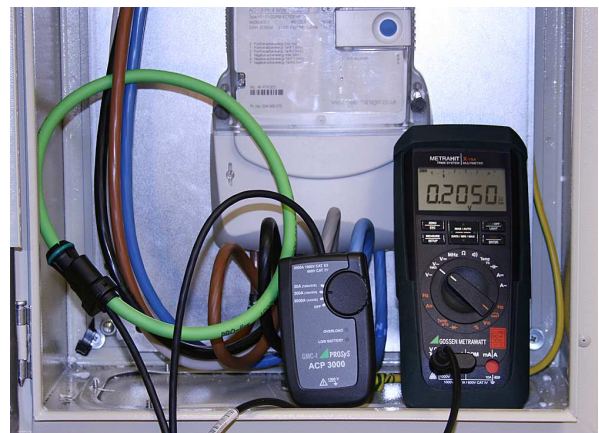
ACP 6000_3 and **ACP 6003_3** are suitable to measure currents up to 6000 Amps AC rms.

These can be either powered by battery or by an external power supply.

Other current ranges or specific output sensitivities can be optimised for your specific requirement.

Typical Applications:

- Connection to most measuring instruments including multimeters, oscilloscopes, PQ recording devices, data loggers etc.
- Electrical maintenance, repair and machine installation and start up applications
- Low and medium voltage distribution installations
- Analysis of current distribution in mains networks
- Analysis of harmonics, power measurements,
- Measurement of peak loads in mains and in UPS.
- Monitoring current transformer secondaries
- High current testing of switchgear and fuses
- Measurement of starting transients of electric motors



Appl_PRO~flex_090821_02